

BEHR 

DYNASTY™

EVERYTHING YOU
WANT IN A PAINT
NOW ALL IN ONE CAN



INTERIOR PAINTS



**OUR MOST DURABLE,
MOST STAIN REPELLENT,
MOST SCUFF RESISTANT,
ONE-COAT HIDE PAINT, EVER.**

BEHR DYNASTY®

MATTE | EGGSHELL | SATIN | SEMI-GLOSS



Advanced Stain Repellency

Blocks existing stains from showing through and minimizes penetration of new stains

Superior Scuff & Mar Resistance

Protects the painted surface from changes in appearance due to scuff, mar, and burnishing, making it ideal for high-traffic areas

One-Coat Hide*

Saves time and labor

Fast-Drying Technology

Reduces downtime between application and use, allowing quick return to service

Outstanding Early Block Resistance

Keeps painted surfaces from sticking together after 4 hours[†]

Paint & Primer[‡] Formula

Removes the step of using a separate primer

MPI-Approved in All Sheens

Meets standard, high performance, and environmental requirements of commercial specifications

Antimicrobial-Mildew Resistant Paint Finish

Provides effective protection from mold and mildew of the dried paint film

Low VOC (< 50 g/L, excluding colorants)

Meets the most stringent VOC regulations nationwide

* Guaranteed one-coat coverage excludes untinted bases and colors outside of the Exclusive BEHR DYNASTY & MARQUEE® One-Coat Color Collection. Multiple coats are required in the following situations:
1) Painting over uncoated, porous, or repaired surfaces; 2) Over woods that contain tannins such as redwood or cedar; or 3) When painting over heavy stains, which may require spot priming, multiple coats and/or longer dry time.

[†] Darker colors may require additional dry time. Longer dry time required in cooler temperatures and higher humidity.

[‡] A primer coat may be needed on some surfaces. Please refer to the Technical Data Sheet (TDS) for details.

| IDEAL APPLICATION | Matte | Eggshell | Satin | Semi-Gloss |
|------------------------------------|-------|----------|-------|------------|
| Family Rooms/Living Rooms/Bedrooms | ● | ● | ● | |
| Dining Rooms/Offices | ● | ● | ● | |
| Kids' Rooms/Hallways | ● | ● | ● | ● |
| Kitchens/Bathrooms | ● | ● | ● | ● |
| Doors/Windows/Shutters | ● | ● | ● | ● |
| Cabinets/Trim/Furniture | ● | ● | ● | ● |

These are commonly used paint sheens for room types or surfaces listed above. Sheen may be affected by texture, porosity of the surface, application method and atmospheric conditions. Please contact a BEHR PRO® Representative or your local Home Depot for specific product availability.



● wall: CATHEDRAL GRAY PPU18-14



● left wall: SCULPTOR CLAY PPU5-08
● right wall: CANYON DUSK SZ10-4



● wall: CAMEO WHITE MQ3-32

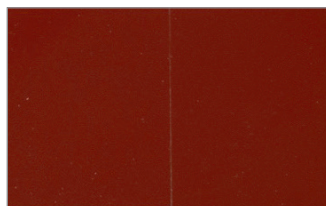
EARLY BLOCK RESISTANCE



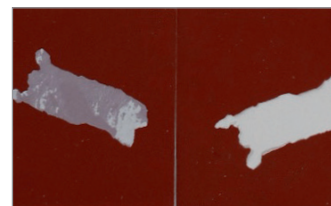
BEHR DYNASTY® AFTER 4 HOURS
Semi-Gloss



NATIONAL BRAND AFTER 4 HOURS
Semi-Gloss



BEHR DYNASTY® AFTER 24 HOURS
Semi-Gloss

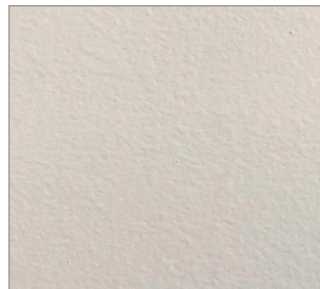
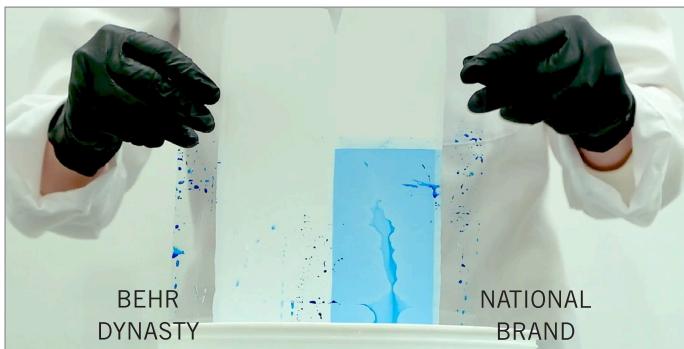


NATIONAL BRAND AFTER 24 HOURS
Semi-Gloss

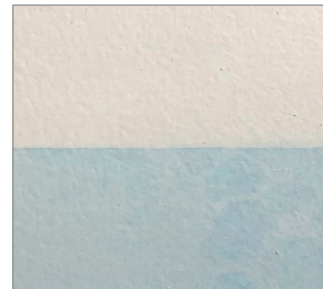
Photo of actual test panel shown above where paints tinted to a red color are applied to sealed test charts at three mils wet film thickness. After drying for four hours, the charts are cut into two pieces, placed face-to-face, and then compressed with a weight that exerts a pressure of weight of 1-kg load for 30 minutes. After 4 and 24 hours as indicated above, the face-to-face sections are pulled apart with slow and steady force to evaluate how the paint resists sticking together.

BEHR DYNASTY pulls apart cleanly, while the National Brand sticks at both the 4-hour and 24-hour tests.

STAIN REPELLENCY



BEHR DYNASTY®
Semi-Gloss



NATIONAL BRAND
Semi-Gloss

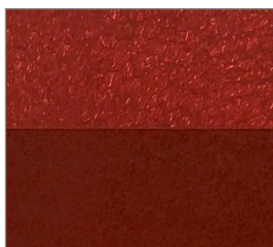
Photo of actual test panel shown above. Half of the panel is coated with BEHR DYNASTY untinted white base and the other half with a National Brand's untinted white base. The painted panel is allowed to dry according to both manufacturers' specifications. The panel is then partially submerged into a solution of water and blue dye for 5 minutes. Once removed, it is rinsed with fresh water and evaluated for stain repellency.

BEHR DYNASTY rinses clean, repelling the stain, while the blue dye has penetrated the film of the National Brand.

ONE-COAT HIDE



BEHR DYNASTY®
Matte

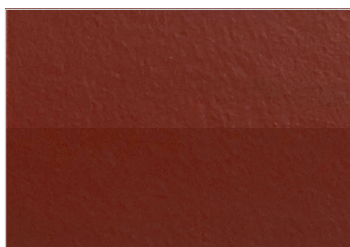


NATIONAL BRAND
Matte

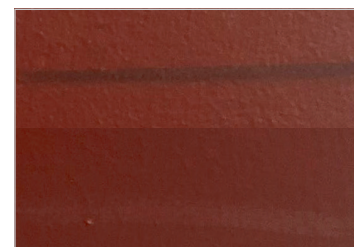
Photo of actual test panel shown here. The panel is first painted white on the top half and black on the bottom half to demonstrate one-coat hide over various colors. The left side is then painted with one coat of BEHR DYNASTY and the right is painted with a national brand, both in matte sheen tinted to a red.

BEHR DYNASTY covers in one coat, while the national brand was not able to hide the previous color, requiring at least one additional coat for full coverage.

SCUFF & MAR RESISTANCE



BEHR DYNASTY®
Matte



NATIONAL BRAND
Matte

Photo of actual test panel shown here is painted on one half with BEHR DYNASTY and on the other half with a National Brand, both in matte sheen tinted to a red. The painted panel is allowed to dry according to both manufacturers' specifications.

On the top half of the panel, a rubber block is rubbed across the surface using even pressure to imitate typical scuffing. On the bottom half of the panel, the back of a plastic spoon is scraped against the board with even pressure, to mimic typical marbling.

BEHR DYNASTY has superior scuff and mar resistance versus the National Brand.

COLOR & INSPIRATION

BEHR DYNASTY® & MARQUEE® One-Coat Color Collection Guarantee*

BEHR DYNASTY Interior Paint is our most durable, most stain-repellent, most scuff resistant, one-coat hide paint, ever. BEHR DYNASTY and MARQUEE products are guaranteed* one-coat when tinted to colors from the One-Coat Hide Color Collection.



TRY A ONE-COAT HIDE SAMPLE TODAY!

Ask your Paint Professional, visit [behr.com](https://www.behr.com) or The Home Depot® for a paint sample.



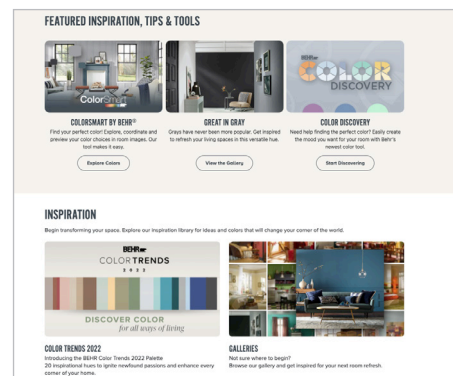
CUSTOM COLOR MATCHING*

Have a specific color in mind? Bring your inspiration to The Home Depot® — a sample of the color that's about 1" x 1" in size: a paint chip from a surface, a piece of fabric, a competitor's paint swatch or even leftover paint — and we'll match it. The color you want is the color you'll get.



BEHR® COLOR STUDIO

Visit Behr's Color Studio [behr.com/colorstudio](https://www.behr.com/colorstudio) where you will find inspiration, color tools, design advice, and other features to help you find the perfect color for your project.



*Guaranteed one-coat coverage excludes untinted bases and colors outside of the Exclusive BEHR DYNASTY & MARQUEE One-Coat Color Collection. Multiple coats are required in the following situations: 1) Painting over uncoated, porous, or repaired surfaces; 2) Over woods that contain tannins such as redwood or cedar; or 3) When painting over heavy stains, which may require spot priming, multiple coats and/or longer dry time.

*Custom colors are not included in the one-coat guarantee.

GREENGUARD® CERTIFIED

Behr offers coatings that meet stringent GREENGUARD certification standards that help earn points toward LEED® certification. GREENGUARD certified products conform to GREENGUARD emission standards to help reduce indoor air pollution and the risk of chemical exposure.



GREENGUARD is a registered trademark of UL LLC. For more information, visit ul.com/gg. Certificates can be found on: spot.ul.com. See usgbc.org/LEED for details.

MPI-APPROVED

Behr has coatings that meet or exceed environmental and performance requirements established by Master Painters Institute® (MPI).

To learn more about MPI or view the most up-to-date MPI-approved BEHR Products, visit the MPI website at paintinfo.com.

MPI is a registered trademark of Master Painters Institute®.



GREENGUARD and MPI trademarks and related logos are property of their respective owners and are used with permission.

Paint colors represented herein are approximations and are not exact matches. No guarantee is intended and approval for final color selections and color placement is the responsibility of the property owner, owner's representative or project manager. Testing your paint color on the surface is highly recommended.

COVER PHOTO:
● walls: CREAMY MUSHROOM PPU5-13
● trim: CAMEO WHITE MQ3-32

Your BEHR PRO® Rep/Your Painting Contractor

For more information on our products and services, visit [behr.com](https://www.behr.com).



© 2022 Behr Process Corporation
Santa Ana, CA 92705 U.S.A.

CP-BEHRPRO-DYNASTY-PRODUCT-LINE
Item No. 50010083
05/22

Exclusively at

