



INTERIOR/EXTERIOR

METAL PRIMER



PROTECT METAL FROM RUST AND CORROSION

BEHR® METAL PRIMER is an interior/exterior rust-inhibitive primer suitable for direct application to clean or sound rusted metal. This innovative water-based primer features fast dry time, low odor, and easy clean-up all the while preventing corrosion with minimal surface preparation.

A PROBLEM SOLVING PRIMER FOR METAL SURFACES



BEHR® METAL PRIMER KEY FEATURES AND BENEFITS

Direct-to-Rust Application*

Helps reduce time spent on surface preparation

Rust-inhibitive

Provides effective protection against rust and corrosion

Excellent Adhesion

Bonds to a wide variety of ferrous and non-ferrous metal substrates

High Hide

Saves time and labor

Fast Drying

Topcoat can be applied in as little as one hour

Easy Soap and Water Clean-up

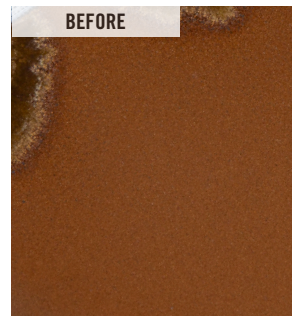
No solvent disposal issues

*Can be applied to sound rusted metal. A rusted metal surface is considered sound when only adherent material remains. Rust, mill scale, and paint are considered adherent if they cannot be removed by lifting with a dull putty knife using moderate pressure.

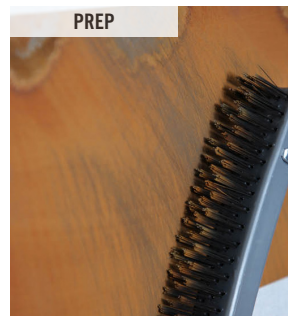
Ideal use for properly prepared coated/uncoated ferrous and non-ferrous metal surfaces such as:

- Doors
- Windows
- Trim
- Flashing
- Shutters
- Fences
- Garage/Roll Up Doors
- Outdoor Furniture
- Railing
- Wrought Iron
- Beams and Girders
- Trusses and Rafters

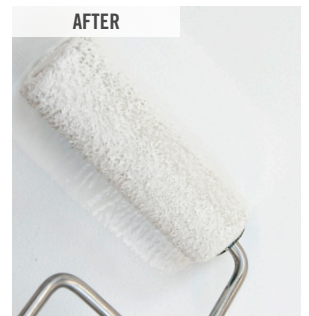
HERE'S HOW THE PRODUCT WORKS:



Step #1: Visually assess surface conditions of the metal substrate.



Step #2: Remove all loose rust with a wire brush and a dry cloth.



Step #3: Apply one to two coats of BEHR® Metal Primer at a minimum dry film thickness of 1.5 mils per coat depending on exposure conditions.

NOTE: Optimum corrosion protection is achieved when topcoated with BEHR PREMIUM® Direct-To-Metal Paints.

CONFORMANCE & COMPLIANCE (AS OF 7/2019)

SCAQMD	YES	OTC	YES
CARB SCM 2007	YES	LADCO	YES
CARB	YES	AIM	YES
OTC Phase II	YES		

Your BEHR PRO Rep/Your Painting Contractor

For more information on our products and services, visit behrpro.com.



© 2019 Behr Process Corporation
Santa Ana, CA 92705 U.S.A.

Exclusively at

