

BEHR[®] PRO

INTERIOR/EXTERIOR

PRE-CATALYZED WATERBORNE EPOXY



HIGH TRAFFIC. HIGH PERFORMANCE.

BEHR PRO[®] Pre-Catalyzed Waterborne Epoxy is a low VOC, single-component acrylic epoxy coating that provides exceptional adhesion as well as resistance to abrasion, stains, and most chemicals. This product is ideal for high maintenance areas subject to frequent cleaning. Available in Eggshell and Semi-Gloss.

HIGH PERFORMANCE COATINGS



BEHR PRO® PRE-CATALYZED WATERBORNE EPOXY KEY FEATURES AND BENEFITS



PRODUCT CERTIFIED
FOR LOW CHEMICAL
EMISSIONS
UL.COM/GG
UL 2818

Single Component (Pre-Catalyzed)

Convenient and ready to use with no sweat-in time or pot life limitations

Excellent Chemical & Stain Resistance

Prolongs life of substrates

Abrasion Resistant

Withstands repeated cleaning requirements

Outstanding Early Block Resistance

Provides tack-free film that keeps painted surfaces from sticking together

Mildew-Resistant Paint Finish

Resists mold and mildew on the dried paint film

Excellent Flow & Leveling

Provides a smooth finish

MPI-Approved in All Sheens

Meets performance and environmental requirements of commercial specifications

Conforms to USDA Regulatory Requirements

Suitable for use in USDA inspected facilities (for incidental food contact)

Ideal for interior use in commercial, institutional, and industrial facilities, such as hospitals, schools, food and beverage processing plants. Also suitable for exterior applications with limited surface areas only. See Technical Data Sheet (TDS) for details.



MANUFACTURING FACILITIES

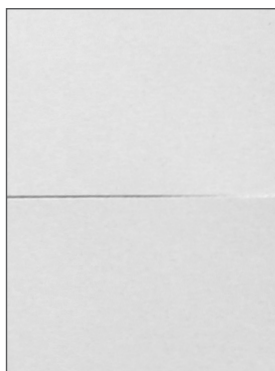


SCHOOLS

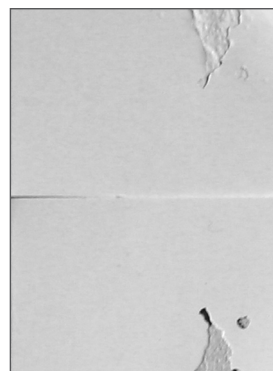


LABORATORIES

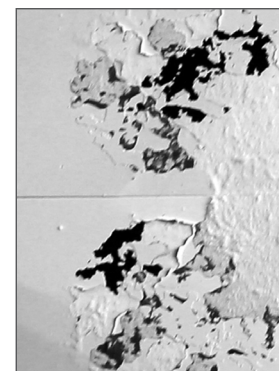
BLOCK RESISTANCE TEST METHOD



BEHR PRO® Pre-Catalyzed Waterborne Epoxy Semi-Gloss



Regional Brand Semi-Gloss



National Brand Semi-Gloss

Paints are applied to sealed test charts at three mils wet film thickness. After drying for two hours, the charts are cut into two pieces, placed face-to-face, and then compressed with a weight that exerts a pressure of one pound-per-square inch. After 24 hours, the face-to-face sections are pulled apart with slow and steady force to evaluate how the paint resists sticking together.

The above test examples are photographs of the actual results. The actual results may be viewed by appointment at Behr Process Corporation.

CONFORMANCE & COMPLIANCE (AS OF 06/2021)

SCAQMD Super-Compliant Coating*	YES	AIM	YES
SCAQMD	YES	MPI®#	YES#
CARB SCM 2007	YES	GREENGUARD® Gold	YES
OTC Phase II	YES	LEED® v.4	YES
OTC	YES	CHPS	YES
LADCO	YES	NAHB®/ICC NGBS	YES

*Meets SCAQMD "super-compliant" VOC standard of <10 g/L.

#For the most up-to-date MPI category approvals, visit the MPI website at paintinfo.com.

GREENGUARD® is a registered trademark of UL LLC®. LEED® — an acronym for Leadership in Energy and Environmental Design — is a registered trademark of U.S. Green Building Council®. NAHB® is a registered trademark of National Association of Home Builders.

Your BEHR PRO Rep/Your Painting Contractor

SELL-SHEET-PRO-PRE-CATALYZED-EPOXY
Item No. 50005517 06/21

Exclusively at



For more information on our products and services, visit behrpro.com.



© 2021 Behr Process Corporation
Santa Ana, CA 92705 U.S.A.