

BEHR
PREMIUM

INTERIOR/EXTERIOR

DIRECT-TO-METAL PAINT



HIGH PERFORMANCE FINISH FOR LONG-LASTING PROTECTION

BEHR PREMIUM® Direct-To-Metal Paint is an interior/exterior water-based coating formulated to provide excellent adhesion and corrosion resistance. Designed for use in residential, commercial, and light industrial settings, this coating may be applied directly to properly prepared ferrous metal surfaces. It is also suitable for use on primed wood, drywall, and masonry substrates. Available in Eggshell and Semi-Gloss sheens.

DELIVERS OUTSTANDING DURABILITY AND AESTHETICS



KEY FEATURES AND BENEFITS



Corrosion & Rust Resistant
Provides effective protection against corrosion and rust

Durable Hard Finish
Withstands tough elements on interior and exterior surfaces

Excellent Adhesion
Sticks to properly prepared or primed metal surfaces

Chemical Resistant
Prolongs life of the finish

Mildew-Resistant Paint Finish
Provides effective protection from mildew growth on the dried paint film

Low VOC (< 50 g/L excluding colorants)
Meets the most stringent VOC regulations nationwide

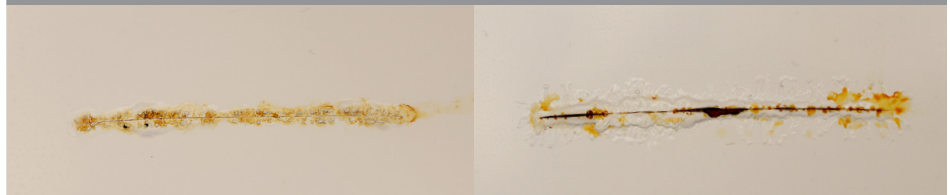
Easy Soap and Water Clean-Up
No solvent disposal issues

Tintable to a Full Range of Colors
Expands color options

Ideal for use on metal fences, railings, doors, and garage doors.

Also suitable for use on properly prepared and primed new or previously painted drywall, wood, plaster, concrete, and masonry surfaces.

COMPARATIVE TEST DATA



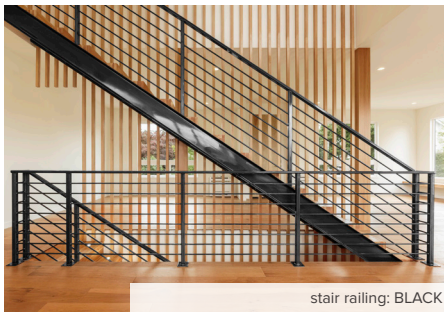
BEHR PREMIUM®
Direct-To-Metal Paint
Semi-Gloss

NATIONAL BRAND
Semi-Gloss

Two coats of paint are applied to a 4-inch by 6-inch steel panel using a drawdown rod at a wet film thickness of 3 mils per coat. Overnight drying was allowed between coats. After allowing the second coat to dry for 24 hours, a scribed line is made with a box knife through each coating to expose underlying metal. The scribed panels are then placed into a salt fog chamber for 504 hours of exposure using a test cycle of 1 hour salt fog followed by 1 hour dry off time. The panels are then moved to another chamber for nonstop exposure to a salt solution for 24 hours, which creates an even more corrosive environment. Upon completion of these exposure tests, the panels are removed, rinsed, and allowed to dry prior to evaluation.

BEHR PREMIUM Direct-To-Metal Semi-Gloss surpasses the competition, with significantly less rust and corrosion development than the leading national brand.

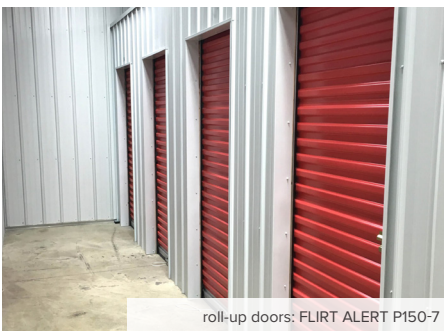
The above test examples are photographs of the actual results. The actual results may be viewed by appointment at Behr Paint Company.



stair railing: BLACK



garage doors: ADIRONDACK BLUE N480-5



roll-up doors: FLIRT ALERT P150-7

CONFORMANCE & COMPLIANCE (AS OF 01/2024)

| | | | |
|---------------|-----|------------------------|-----|
| SCAQMD | YES | AIM | YES |
| CARB SCM 2007 | YES | GREENGUARD® | YES |
| CARB | YES | LEED® v.4 [†] | YES |
| OTC Phase II | YES | CHPS | YES |
| OTC | YES | NAHB/ICC NGBS | YES |
| LADCO | YES | USDA [‡] | YES |

* GREENGUARD is a registered trademark of UL Company.

† Please visit www.usgbc.org/LEED for additional details.

‡ This coating conforms to United States Department of Agriculture (USDA) regulatory requirements for incidental food-contact materials intended for use on surfaces not in direct contact with food, such as walls, floors and ceilings.



©2024 Behr Process Corporation
Santa Ana, CA 92705 U.S.A.

COVER IMAGE:
doors: SILKY WHITE PPU7-12
accent (metal substrates): ASPHALT GRAY N520-6

For more information on our products and services,
visit behrpro.com.

SELL-SHEET-PRO-DIRECT-TO-METAL
Item No. 50012230
01/2024

Exclusively at

